

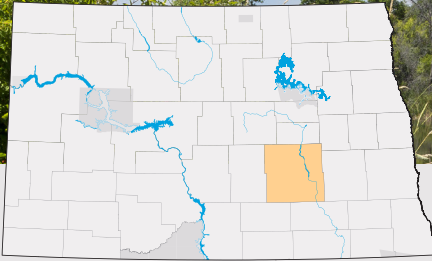


# VALLEY CITY PERMANENT FLOOD PROTECTION

LOOKING AHEAD  
2025-2027

**\$12**  
MILLION

HB 1020



## QUICK FACTS



## PROJECT PHASES



## COMBINED PROTECTION

(Flood Walls, Earthen Levees, Pump Stations and Stream Bank Restoration)



## CLOMR COMPLETION

(Conditional Letter Of Map Revision)



## LEGISLATIVE DISTRICT

(24)

## CURRENT DWR COST-SHARE

**80%**  
Construction

**85%**  
Engineering

## BACKGROUND AND PURPOSE

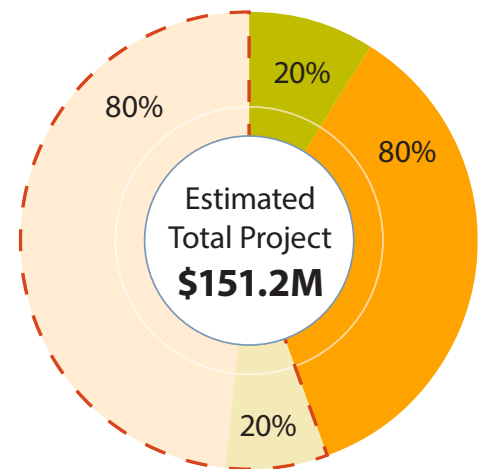
The Sheyenne River flows roughly 591 miles from central North Dakota, eventually meandering its way east to the Red River near Fargo. Valley City sits along the Sheyenne River, downstream of Baldhill Dam, which forms Lake Ashtabula. During a typical spring each year, the river swells from snow melt with water levels peaking around March and April, often creating flood conditions. After experiencing major flooding in 2009, 2010, and 2011, the cities of Valley City and Lisbon each decided to pursue permanent flood protection. Collectively known as the Sheyenne River Valley Flood Protection project, the City of Lisbon completed its flood protection in 2018. Valley City has completed phases I-III, with phase IV scheduled for 2025, and an estimated overall completion date of 2035.

## HISTORIC FUNDING

Local	\$12.4M
State	\$49.5M

## FUTURE FUNDING

Est. Remaining Funds	\$76.5M
Local	\$15.3M
State	\$61.2M



## LOCAL SPONSOR

Through the State Water Commission's Cost-Share Program, Valley City is receiving an elevated cost-share percentage due to past and potential future impacts caused by water releases from the Devils Lake outlets, which empty into the Sheyenne River.



NORTH  
**Dakota**  
Be Legendary.

Water Resources

MAY 2025