

PLATE 1.—GEOLOGIC SECTION OF BEDROCK FORMATIONS, MORTON COUNTY, NORTH DAKOTA

Geohydrology by D. J. Ackerman, 1978

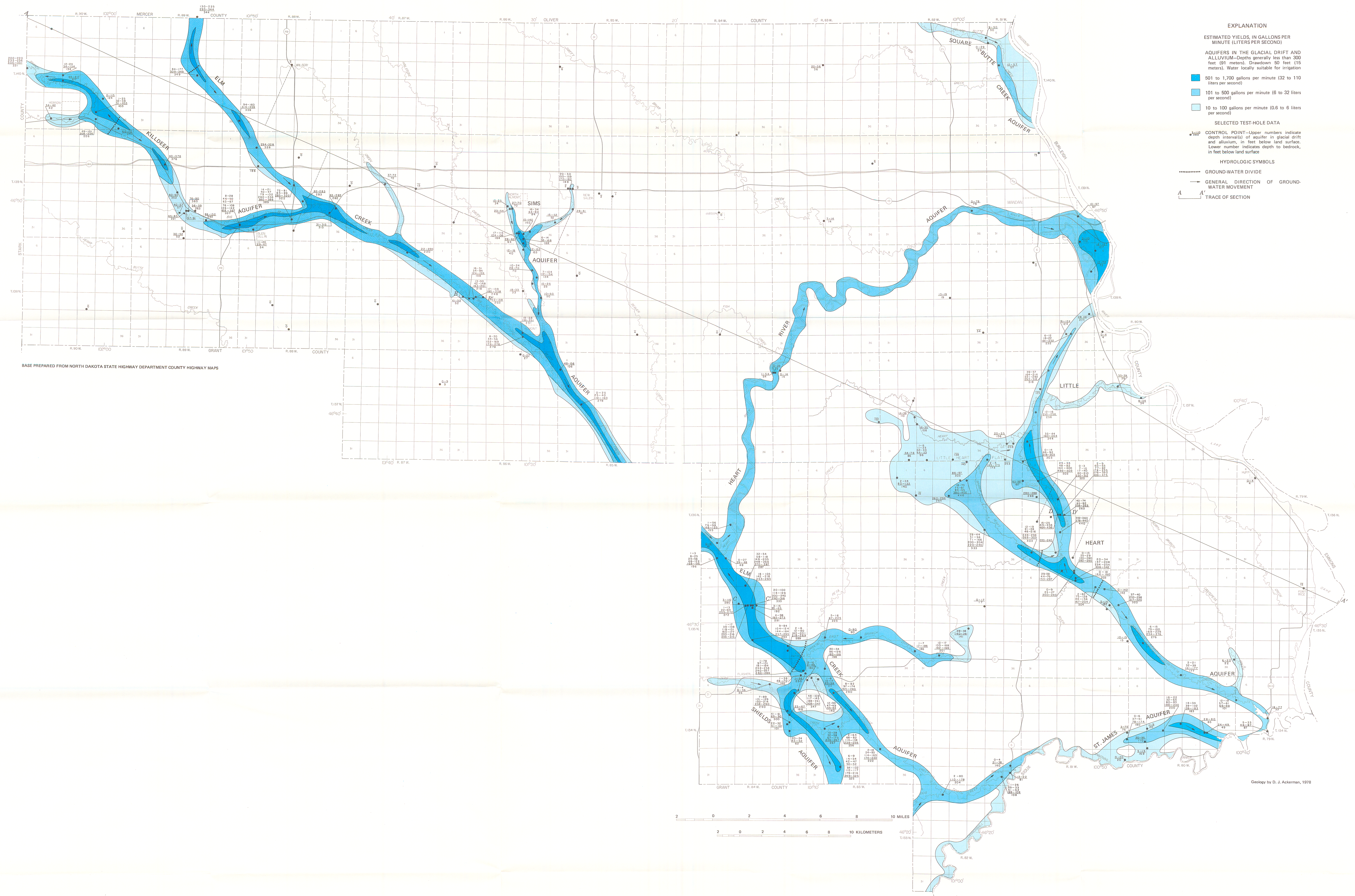
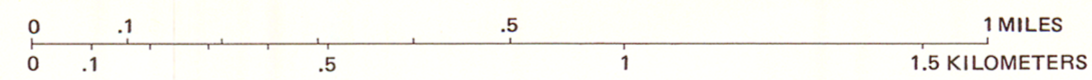
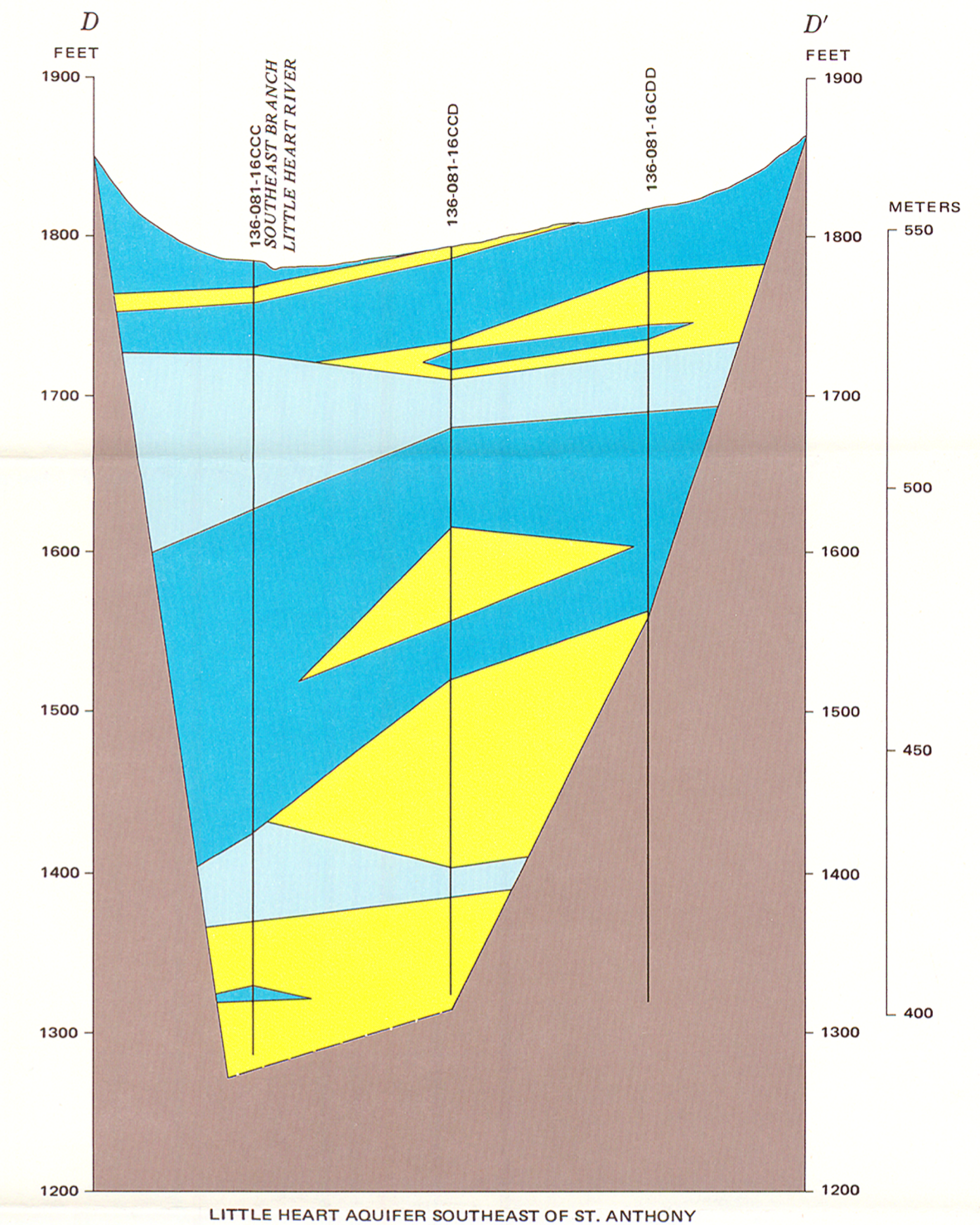
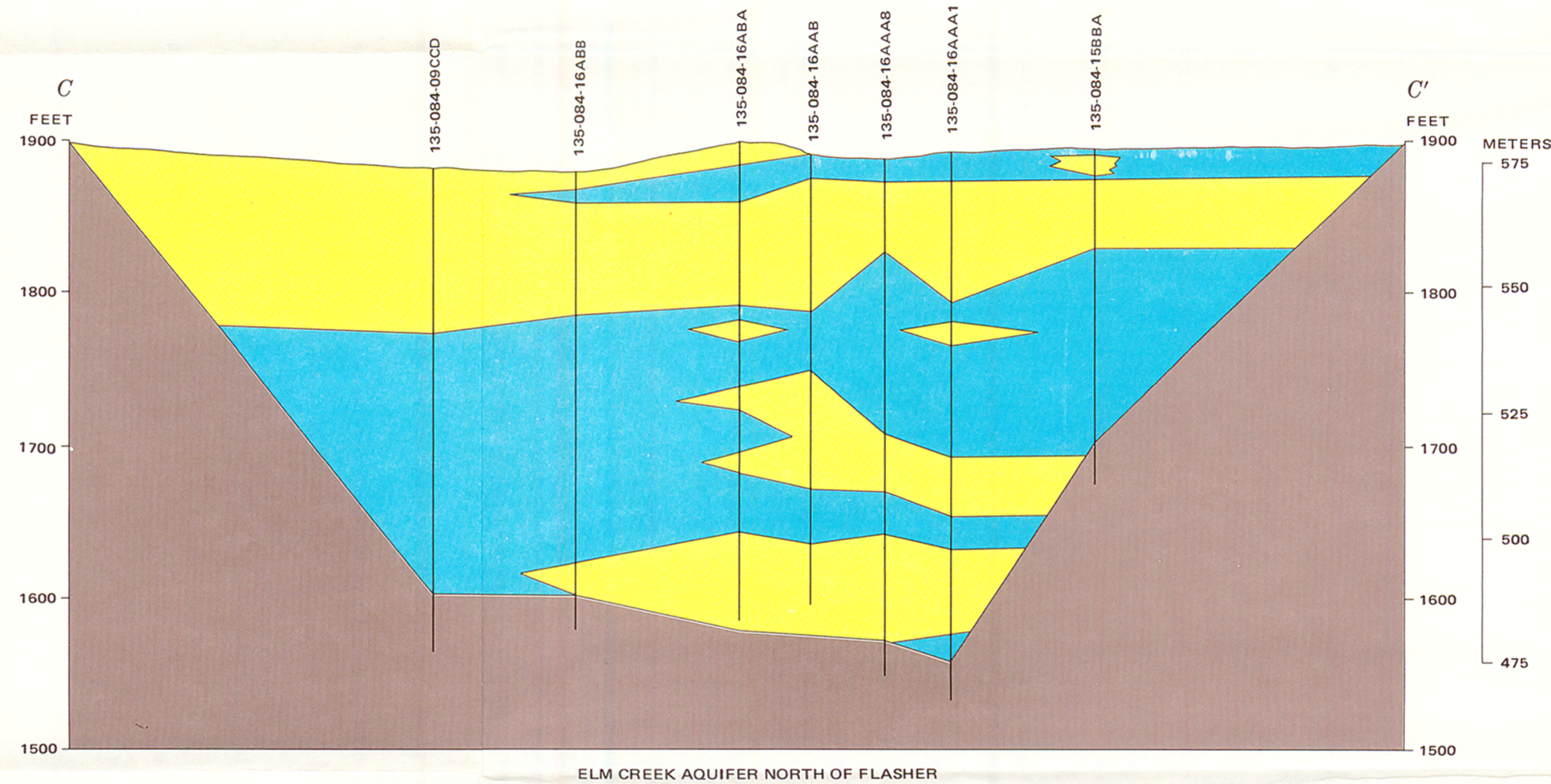
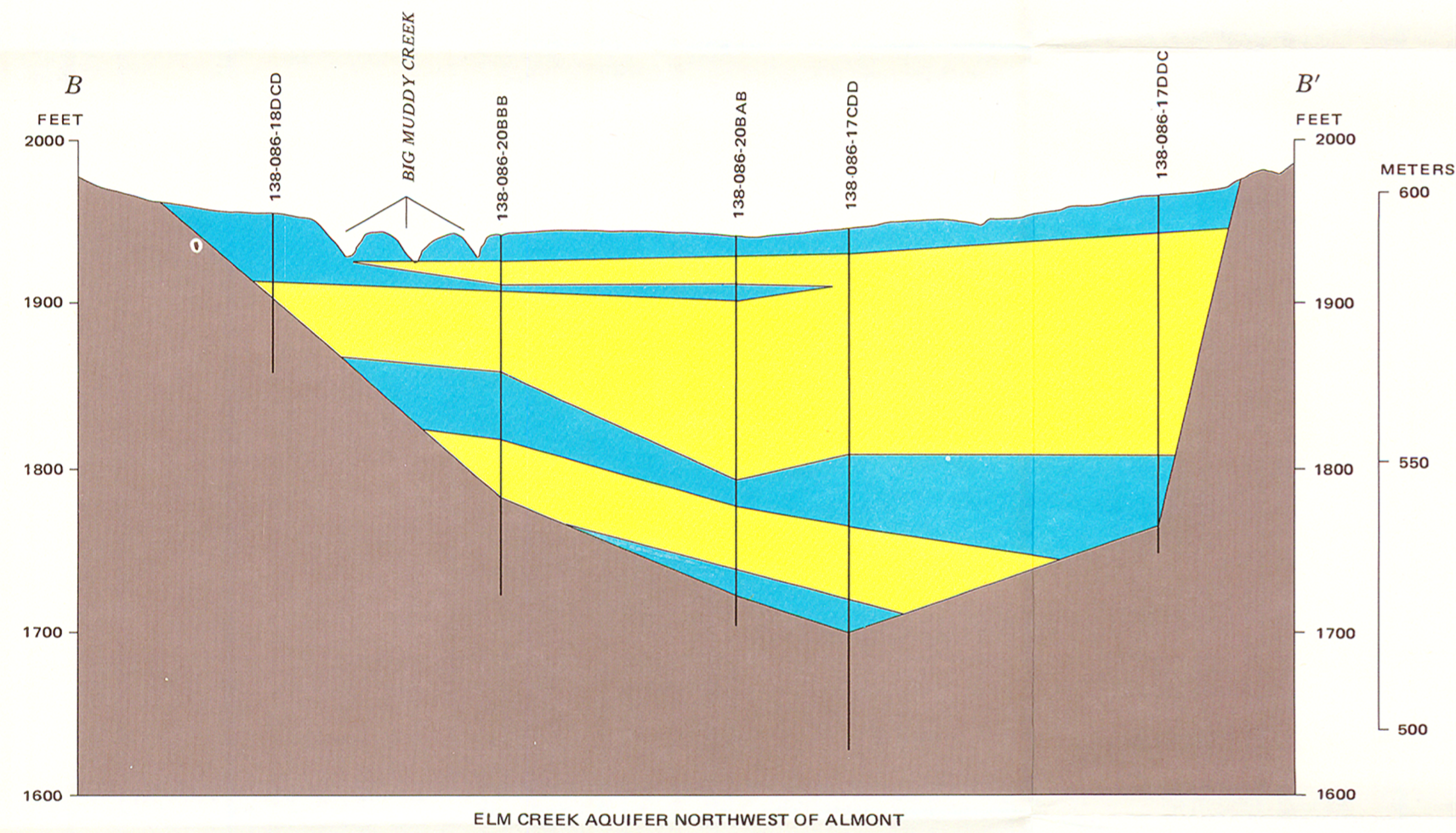


PLATE 2.—MAP SHOWING AVAILABILITY OF GROUND WATER FROM GLACIAL-DRIFT AND ALLUVIAL AQUIFERS IN MORTON COUNTY, NORTH DAKOTA



VERTICAL EXAGGERATION x 10.6
DATUM IS NGVD OF 1929

EXPLANATION

- SAND AND GRAVEL
- SILT AND SAND
- SILT AND CLAY
- BEDROCK

- CONTACT—Dashed where inferred
- TRACE OF SECTIONS SHOWN ON PLATE 2

PLATE 3.—GEOLOGIC SECTION OF GLACIAL-DRIFT AQUIFERS, MORTON COUNTY, NORTH DAKOTA

Geohydrology by D. J. Ackerman, 1978