

**EXPLANATION**

- 1518 TEST HOLE OR WELL—Number is altitude of top of Pierre Shale or Fox Hills Sandstone, in feet above National Geodetic Vertical Datum of 1929
- 1600—BEDROCK CONTOUR—Shows altitude of bedrock surface. Contour interval 100 feet (30 meters). National Geodetic Vertical Datum of 1929
- APPROXIMATE EASTERN LIMIT OF THE FOX HILLS SANDSTONE

BASE FROM NORTH DAKOTA STATE HIGHWAY DEPARTMENT COUNTY HIGHWAY MAP, 1977

Geohydrology by R. L. Klausning, 1981

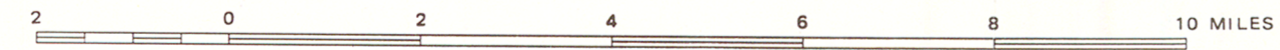
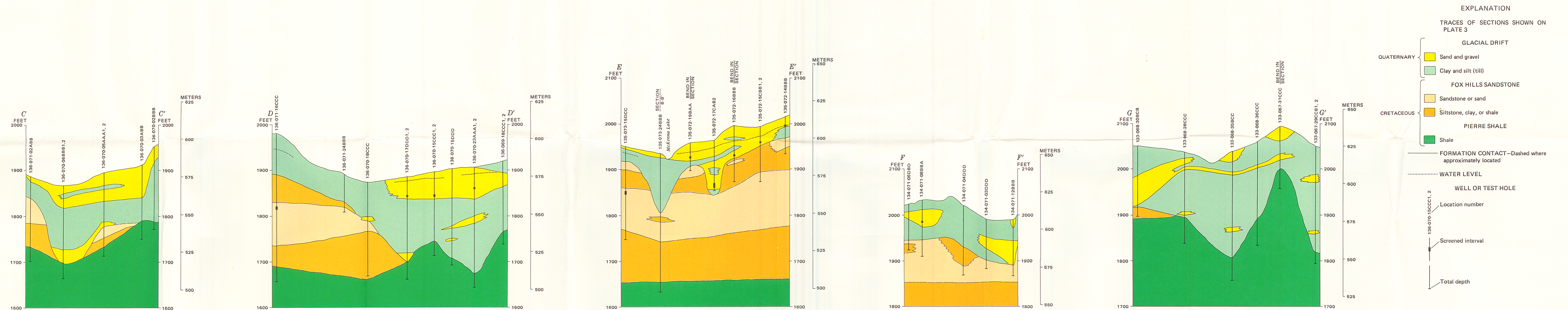
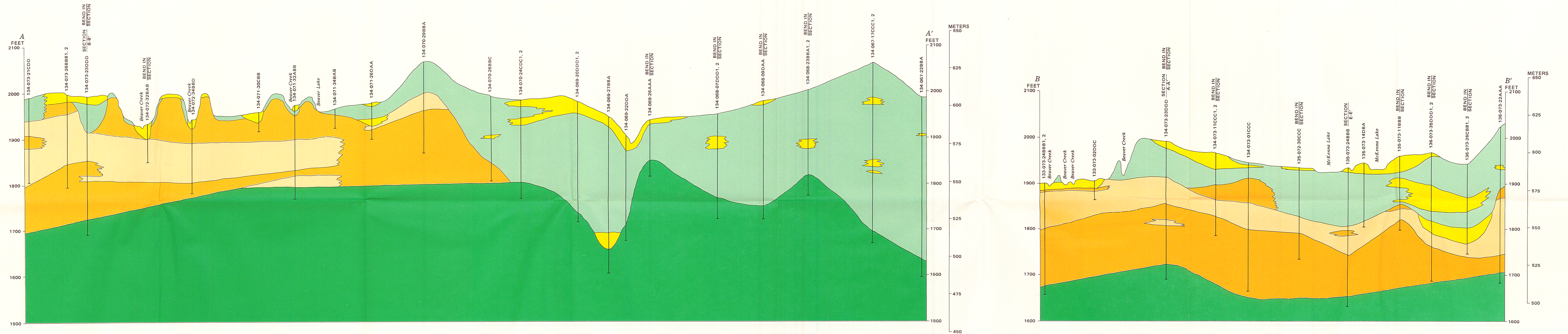
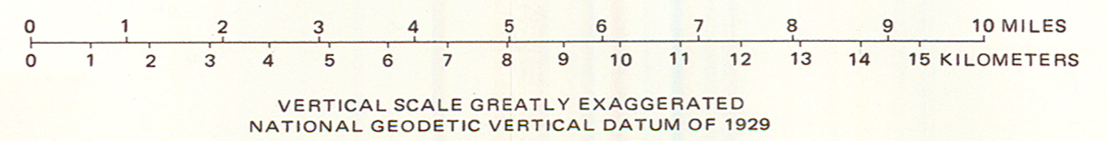


PLATE 1.—MAP SHOWING BEDROCK TOPOGRAPHY, LOGAN COUNTY, NORTH DAKOTA

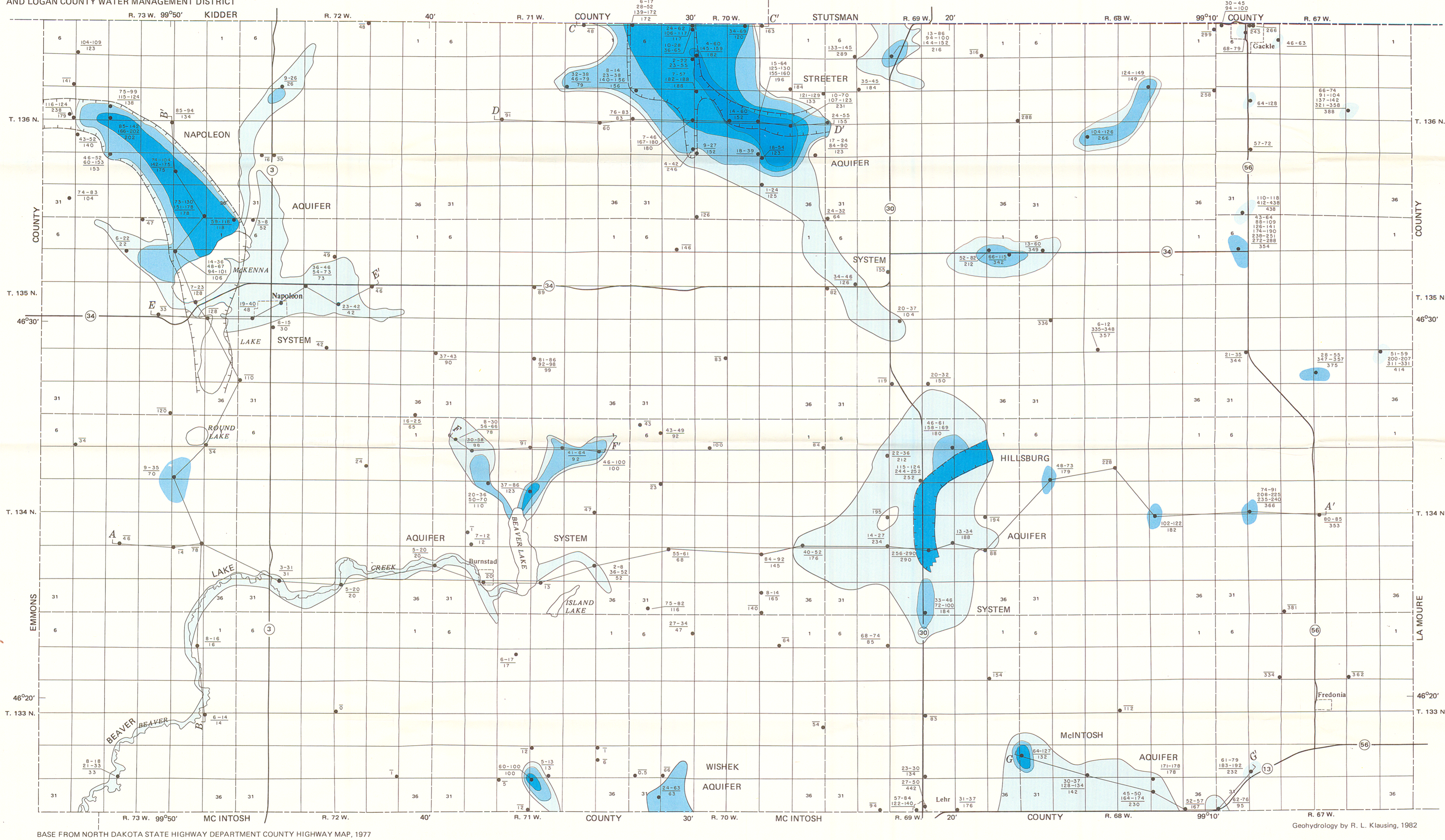


- EXPLANATION
- TRACES OF SECTIONS SHOWN ON PLATE 3
- QUATERNARY
    - GLACIAL DRIFT
      - Sand and gravel
      - Clay and silt (till)
  - FOX HILLS SANDSTONE
    - Sandstone or sand
    - Siltstone, clay, or shale
  - PIERRE SHALE
    - Shale
- FORMATION CONTACT—Dashed where approximately located
- WATER LEVEL
- WELL OR TEST HOLE
- Location number
  - Screened interval
  - Total depth



VERTICAL SCALE GREATLY EXAGGERATED  
 NATIONAL GEODETIC VERTICAL DATUM OF 1929

PLATE 2.—GEOHYDROLOGIC SECTIONS IN LOGAN COUNTY, NORTH DAKOTA  
 Geology by R. L. Klausung, 1981



**EXPLANATION**

ESTIMATED POTENTIAL WELL YIELDS,  
 IN GALLONS PER MINUTE  
 (LITERS PER SECOND)

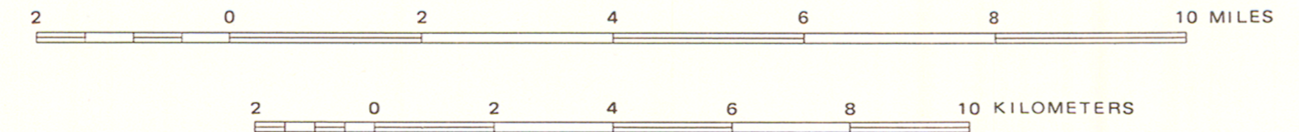
- 1000 to 1500 (63 to 95)
- 500 to 1000 (32 to 63)
- 200 to 500 (13 to 32)
- 50 to 200 (3.2 to 13)
- 0 to 50 (0 to 3.2)

**SELECTED TEST-HOLE AND WELL DATA**

TEST HOLE OR WELL—Upper numbers are top and base of aquifer depth intervals in glacial drift. Sand and gravel thicknesses of less than 5 feet (1.5 meters) are not shown. Lower number is depth to bedrock, in feet below land surface. Absence of lower number indicates that the test hole or well did not completely penetrate the glacial drift.

— YIELD BOUNDARY  
 - - - - - LOCATION OF BURIED VALLEY  
 A A' TRACE OF SECTION

BASE FROM NORTH DAKOTA STATE HIGHWAY DEPARTMENT COUNTY HIGHWAY MAP, 1977



Geohydrology by R. L. Klausning, 1982

PLATE 3.—MAP SHOWING AVAILABILITY OF WATER FROM GLACIAL-DRIFT AQUIFERS IN LOGAN COUNTY, NORTH DAKOTA