

NEWS RELEASE | FOR IMMEDIATE RELEASE | October 7, 2019

State Water Commission to Conduct Airborne Electromagnetic Survey over parts of Griggs, Ramsey, and Towner Counties

The North Dakota State Water Commission is planning to conduct an aerial electromagnetic survey (AEM) of aquifers in parts of Griggs, Ramsey, and Towner Counties. The survey is scheduled to begin the week of October 15, and involves a helicopter towing a large hoop-shaped antenna about 100 feet above the ground that sends and receives electromagnetic signals to characterize geology beneath the land surface.

The results of the survey will provide imagery and characteristics of the subsurface materials that can aid in the mapping of the buried glacial aquifer deposits that contain major groundwater supplies.

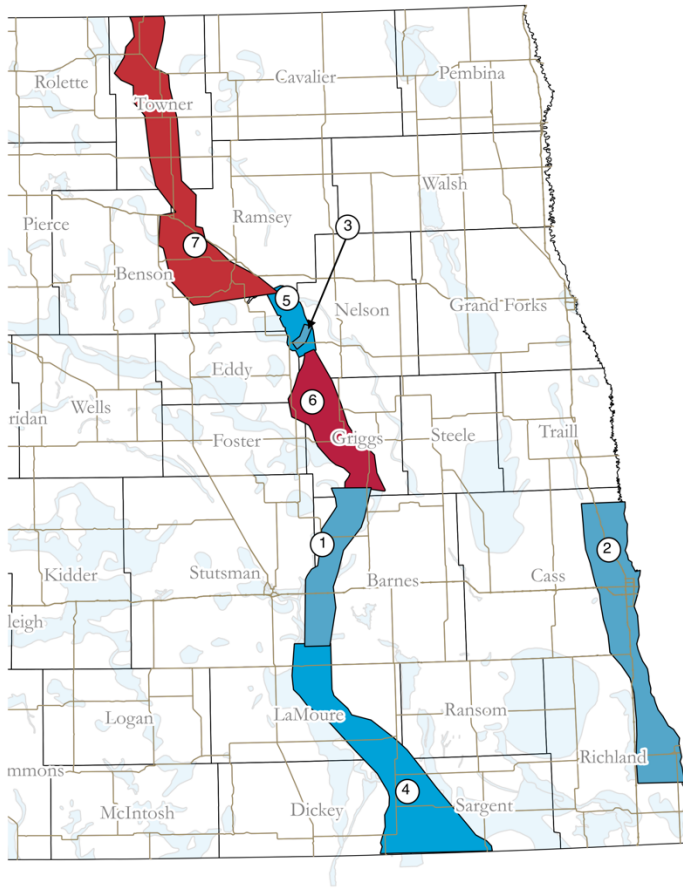
"This will be the fourth year the State Water Commission (SWC) has used AEM surveys, and it has become an important tool in groundwater investigations," said Jon Patch, Director of Water Appropriations for the SWC. "With this data collection we will have completed AEM surveying over the entire Spiritwood aquifer system in the state of North Dakota. A massive amount of data has been collected and is being used to make sound scientific decisions concerning the management, investigation and appropriation of the state's groundwater resources."

The flight survey will include about 3,000 flight kilometers flown in a grid pattern with primarily east-west trending flight lines spaced 500 to 2,000 meters apart. Two separate blocks will be flown. The first being a 330 square mile area in Griggs County. The second being a 760 square mile area in Ramsey and Towner Counties - from Devils Lake to the international border. The project is expected to take about four weeks to complete. "We want the public and residents living near the area to be informed about the survey. We hope to wrap up field data collection before the end of November, weather permitting," said Patch.

The primary contractor performing the work is Geotech Airborne, of Aurora Ontario Canada. The helicopter will be manned by experienced pilots who are specially trained for low-level flying with this equipment, and all operations will be conducted within Federal Aviation Administration regulations.

Please follow the link for a map, flight video, and more information:

http://www.swc.nd.gov/reg_approp/aem/

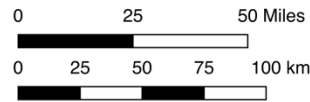


NDSWC AEM Survey Project Map

1. Spiritwood Buried Valley 2016. 300 sq. miles
2. Wahpeton Buried Valley 2017. 620 sq. miles
3. Spiritwood - Warwick 2017. 13 sq. miles
4. Spiritwood Buried Valley South 2019. 710 sq. miles
5. Spiritwood - Tolna 2019. 110 sq. miles
6. Spiritwood - Griggs 2019/2020, 330 sq. miles
7. Spiritwood - Towner 2019/2020, 760 sq. miles

Legend

- Completed AEM Surveys
- Proposed 2019 AEM Surveys
- aquifers



For More Information Contact:

Water Commission (701) 328-2750

Jessie Wald, *PIO*

Water Commission | 900 East Boulevard Ave | Bismarck, ND 58505
PHONE: (701) 328-2782 | FAX: (701) 328-3696 | E-MAIL: jessiewald@nd.gov

www.swc.nd.gov