

June 15, 2026

North Dakota Department of Environmental Quality
 Division of Water Quality
 918 East Divide Avenue
 Bismarck, ND 58501-1947

RE: May 2026 Devils Lake Outlets Monthly Discharge and Water Quality Report

Division of Water Quality:

The West End Outlet began operating on May 11 at 100 cfs, increasing to 175 cfs on May 13, where it remained. The East End Outlet began discharging on May 14 at 150 cfs and remained at that rate. Both outlets experienced temporary discharge adjustments due to intake screen clogging. The discharge rates noted above are the design pump capacities. The actual discharge measurements recorded by the flow meters are provided in the table below and included in the enclosures.

The table below summarizes the average discharge rate and total discharge volume for the Outlets in June.

	Average Discharge Rate (cfs)	Total Discharge Volume (acre-feet)
West End Outlet	96	5,918
East End Outlet	92	5,629
Combined Total Discharge Volume (acre-ft)		11,547

The attached figures and tables contain daily outlet discharges measured from the flow meters and water quality results from samples collected from the outlets and the corresponding upstream and downstream locations. Also included are average daily stream flow data and conductivity data obtained from the USGS gaging stations located upstream and downstream of the outlets.

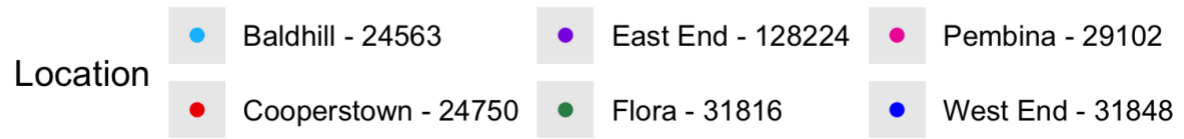
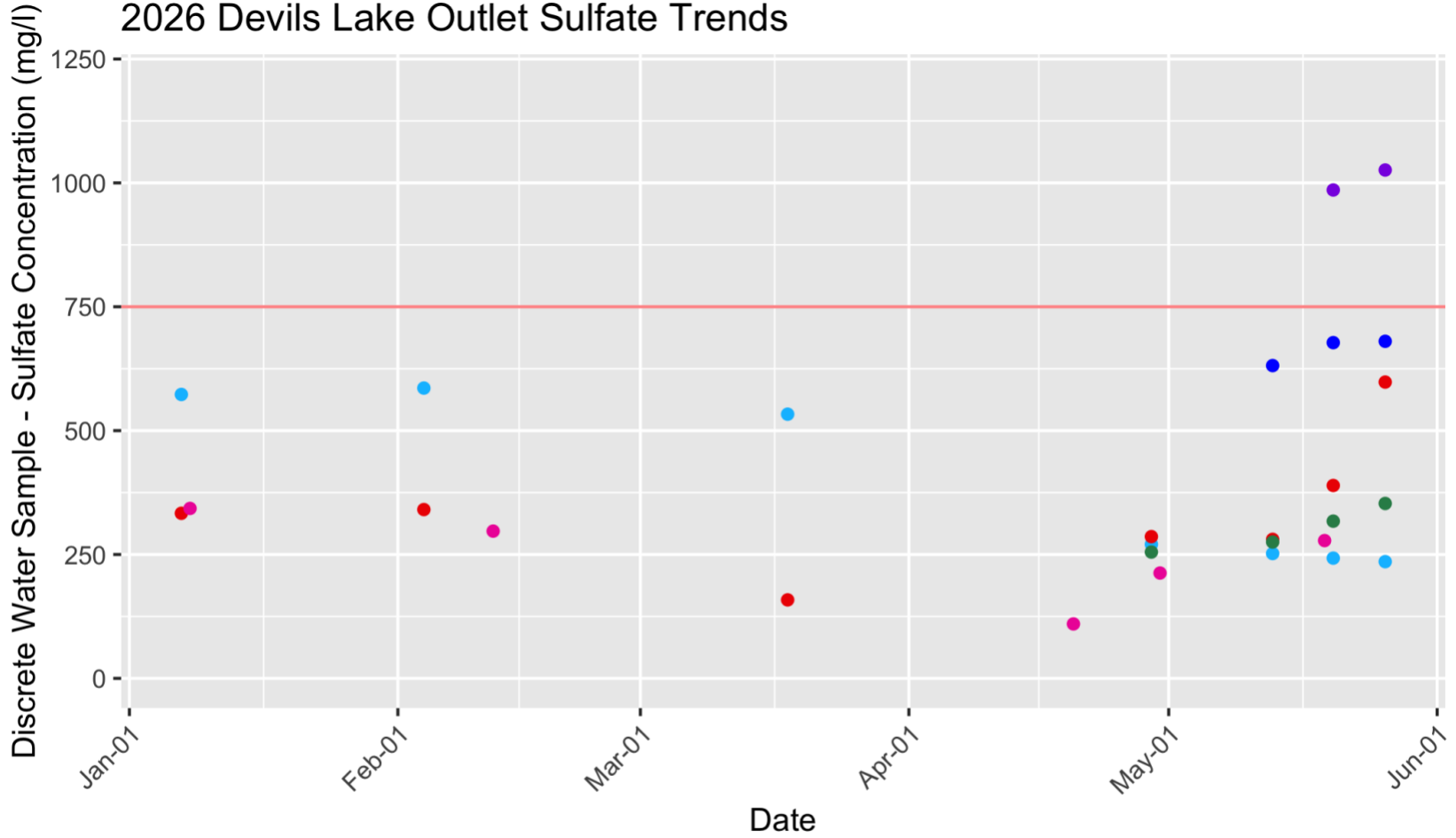
If you have any questions, please contact me at (701) 328-9049.

Sincerely,

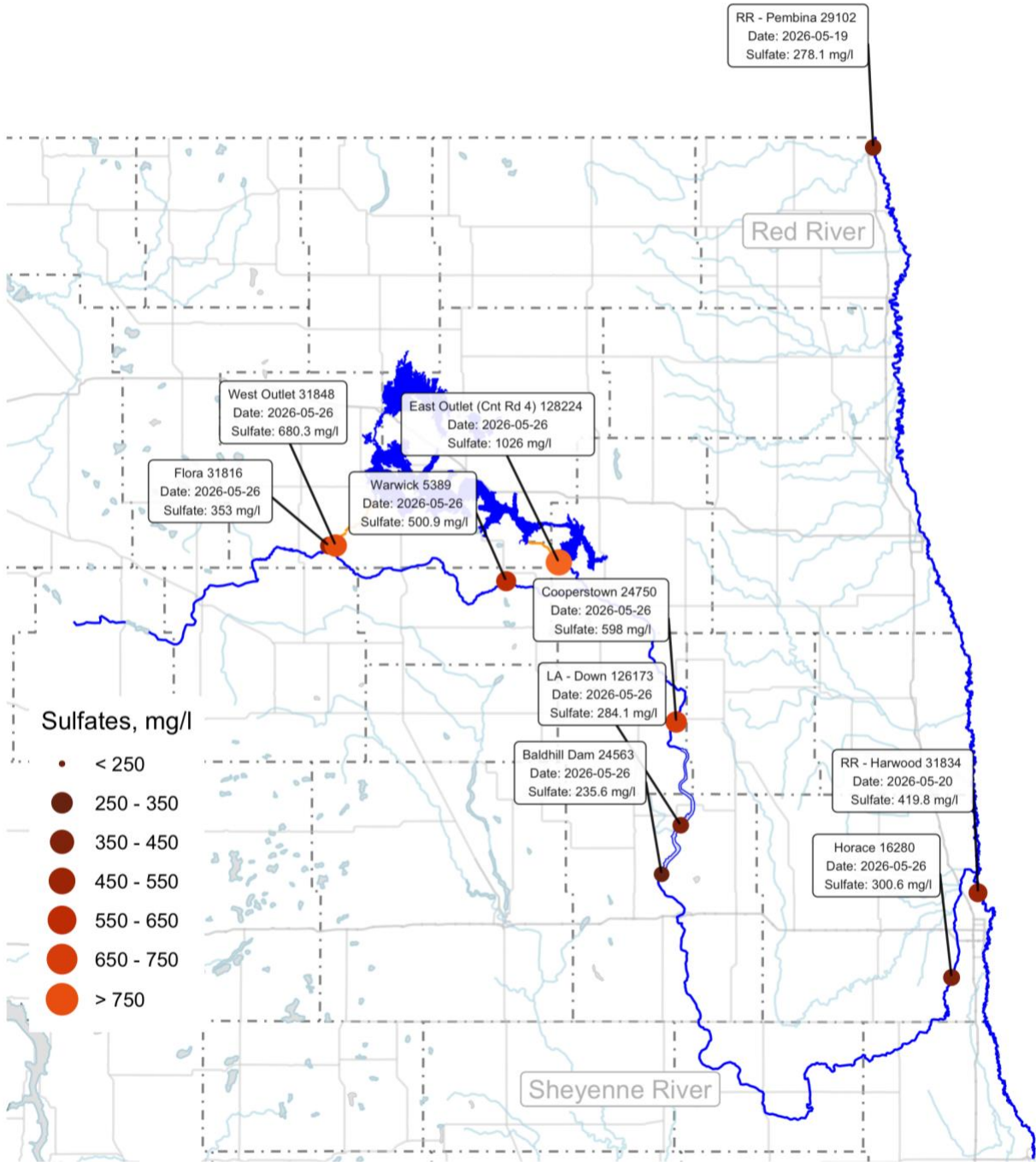


Yaping Chi, P.E.
 Water Resource Engineer, Water Development Division
 YC:/416-10
 Enclosure

2026 Devils Lake Outlet Sulfate Trends



Devils Lake Outlet Operations Sulfate Concentrations 5/31/26



OUTLET OPERATOR NAME/ADDRESS
 NAME: ND Dept. of Water Resources
 ADDRESS: 1200 Memorial Highway,
 Bismarck ND 58504

MONTHLY DISCHARGE REPORT


LOCATION: WEST END OUTLET

FACILITY: Devils Lake Outlet Project

MONITORING PERIOD	
START DATE	END DATE
5/1/26	5/31/26

LOCATION: Benson Co, ND

Devils Lake West Outlet 5918 ac-ft over 31 Days

PARAMETER	MINIMUM	MAXIMUM	AVERAGE	UNITS	SAMPLING FREQUENCY	TYPE
pH	8.41	8.48	8.44	SU	1 X Week	GRAB
SULFATE	631	680	663	mg/l	1 X Week	GRAB
7 DAY AVERAGE OF SULFATE	631	680	663	mg/L	Average	GRAB
OUTLET DISCHARGE	0	159	96	cfs	Continuous	Recorder
SIGNATURE				6/12/26	701-328-9049	
NAME AND TITLE	YAPING CHI, WATER RESOURCES ENGINEER, WATER DEVELOPMENT DIVISION			DATE	TELEPHONE NUMBER	

COMMENT AND EXPLANATION OF ANY VIOLATIONS

A summary of individual sample results and flow data for both outlets, and upstream & downstream monitoring location is attached.

Notes:

- ac-ft - Acre feet
- SU - Standard Units
- µS/cm - microsiemens per Centimeter at 25 degrees Celsius
- mg/L - milligrams per liter or parts per million
- cfs - cubic feet per second

OUTLET OPERATOR NAME/ADDRESS
 NAME: ND Dept. of Water Resources
 ADDRESS: 1200 Memorial Highway,
 Bismarck ND 58504

MONTHLY DISCHARGE REPORT


LOCATION: EAST END OUTLET

FACILITY: Devils Lake Outlet Project

MONITORING PERIOD	
START DATE	END DATE
5/1/26	5/31/26

LOCATION: Ramsey, Benson, Nelson Co, ND

Devils Lake East Outlet 5629 ac-ft over 31 Days

PARAMETER	MINIMUM	MAXIMUM	AVERAGE	UNITS	SAMPLING FREQUENCY	TYPE
pH	8.55	8.62	8.59	SU	1 X Week	GRAB
SPECIFIC CONDUCTANCE	2890	2900	2895	µS/cm	Continuous	Recorder
SULFATE	986	1026	1006	mg/L	1 X Week	GRAB
7 DAY AVERAGE OF SULFATE	986	1026	1006	mg/l	Average	GRAB
OUTLET DISCHARGE	0	165	92	cfs	Continuous	Recorder
SIGNATURE				6/12/26	701-328-9049	
NAME AND TITLE	YAPING CHI, WATER RESOURCES ENGINEER, WATER DEVELOPMENT DIVISION			DATE	TELEPHONE NUMBER	

COMMENT AND EXPLANATION OF ANY VIOLATIONS

Notes:

- ac-ft - Acre feet
- SU - Standard Units
- µS/cm - microsiemens per Centimeter at 25 degrees Celsius
- mg/L - milligrams per liter or parts per million
- cfs - cubic feet per second

OUTLET OPERATOR NAME/ADDRESS
 NAME: ND Dept. of Water Resources
 ADDRESS: 1200 Memorial Highway,
 Bismarck ND 58504


MONTHLY DISCHARGE REPORT

LOCATION: UPSTREAM OF THE WEST END OUTLET (FLORA)

FACILITY: Devils Lake Outlet Project

LOCATION: Benson, ND

MONITORING PERIOD	
START DATE	END DATE
5/1/26	5/31/26

PARAMETER	MINIMUM	MAXIMUM	AVERAGE	UNITS	SAMPLING FREQUENCY	TYPE
pH	8.33	8.44	8.39	SU	1 X Week	GRAB
SPECIFIC CONDUCTANCE	1390	1530	1460	µS/cm	Continuous	Recorder
SULFATE	275	353	315	mg/L	1 X Week	GRAB
7 DAY AVERAGE OF SULFATE	275	353	315	mg/l	Average	GRAB
FLOW, INSTREAM	39	101	67	cfs	Continuous	Recorder
SIGNATURE				6/12/26	701-328-9049	
NAME AND TITLE	YAPING CHI, WATER RESOURCES ENGINEER, WATER DEVELOPMENT DIVISION			DATE	TELEPHONE NUMBER	
COMMENT AND EXPLANATION OF ANY VIOLATIONS						
A summary of individual sample results and flow data for both outlets, and upstream & downstream monitoring location is attached						

Notes:

- ac-ft - Acre feet
- SU - Standard Units
- µS/cm - microsiemens per Centimeter at 25 degrees Celsius
- mg/L - milligrams per liter or parts per million
- cfs - cubic feet per second

OUTLET OPERATOR NAME/ADDRESS
 NAME: ND Dept. of Water Resources
 ADDRESS: 1200 Memorial Highway,
 Bismarck ND 58504


MONTHLY DISCHARGE REPORT

LOCATION: DOWNSTREAM OF BOTH OUTLETS (COOPERSTOWN)

FACILITY: Devils Lake Outlet Project

MONITORING PERIOD	
START DATE	END DATE
5/1/26	5/31/26

LOCATION: Griggs Co, ND

PARAMETER	MINIMUM	MAXIMUM	AVERAGE	UNITS	SAMPLING FREQUENCY	TYPE
pH	8.35	8.46	8.42	SU	1 X Week	GRAB
SPECIFIC CONDUCTANCE	1250	1980	1597	µS/cm	Continuous	Recorder
SULFATE	281	598	423	mg/L	1 X Week	GRAB
7 DAY AVERAGE OF SULFATE	281	598	423	mg/l	Average	GRAB
FLOW, INSTREAM	214	645	411	cfs	Continuous	Recorder
SIGNATURE				6/12/26	701-328-9049	
NAME AND TITLE	YAPING CHI, WATER RESOURCES ENGINEER, WATER DEVELOPMENT DIVISION			DATE	TELEPHONE NUMBER	
COMMENT AND EXPLANATION OF ANY VIOLATIONS						
A summary of individual sample results and flow data for both outlets, and upstream & downstream monitoring location is attached						

Notes:

- ac-ft - Acre feet
- SU - Standard Units
- µS/cm - microsiemens per Centimeter at 25 degrees Celsius
- mg/L - milligrams per liter or parts per million
- cfs - cubic feet per second

Date	Above West End Outlet - Sheyenne River near Flora		West End Outlet		Below West End Outlet/Above East End Outlet -Sheyenne River near Bremen		East End Outlet		Below East End Outlet - Tolna Coulee near Tolna		Below East End Outlet - Sheyenne River near Cooperstown		Sum of Outlets	
	Average Streamflow USGS Gage (cfs)	Average Specific Conductance USGS Gage (µS/cm)	Average Daily Outlet Discharge (cfs)	Total Daily Volume (ft3)	Average Streamflow USGS Gage (cfs)	Average Specific Conductance USGS Gage (µS/cm)	Average Daily Outlet Discharge (cfs)	Total Daily Volume (ft3)	Average Streamflow USGS Gage (cfs)	Average Specific Conductance USGS Gage (µS/cm)	Average Streamflow USGS Gage (cfs)	Average Specific Conductance USGS Gage (µS/cm)	Average Daily Outlet Discharge (cfs)	Total Daily Volume (ft3)
5/1/2026	101	1260	0	0	107	1280	0	0	1	907	346	1150	0	0
5/2/2026	99	1260	0	0	103	1280	0	0	1	897	335	1160	0	0
5/3/2026	98	1280	0	0	96	1290	0	0	1	911	324	1180	0	0
5/4/2026	91	1290	0	0	89	1310	0	0	1	881	310	1190	0	0
5/5/2026	86	1310	0	0	89	1320	0	0	1	847	297	1210	0	0
5/6/2026	83	1330	0	0	88	1320	0	0	2	874	290	1220	0	0
5/7/2026	78	1330	0	0	85	1330	0	0	1	823	281	1220	0	0
5/8/2026	74	1340	0	0	80	1350	0	0	1	1220	275	1230	0	0
5/9/2026	72	1350	0	0	78	1360	0	0	2	1460	268	1220	0	0
5/10/2026	70	1350	0	0	76	1360	0	0	1	1410	259	1230	0	0
5/11/2026	68	1370	75	6511018	77	1380	0	0	1	1370	250	1230	75	6511018
5/12/2026	67	1380	80	6882365	113	1550	0	0	1	1340	247	1250	80	6882365
5/13/2026	66	1390	141	12166589	152	1670	0	0	1	1350	235	1250	141	12166589
5/14/2026	64	1400	143	12391056	207	1750	98	8458000	89	-	225	1250	241	20849056
5/15/2026	59	1400	145	12565238	175	1740	163	14097000	157	-	220	1250	309	26662238
5/16/2026	57	1420	145	12495946	217	1770	163	14050000	158	-	214	1260	307	26545946
5/17/2026	57	1430	143	12349756	244	1800	165	14269000	163	-	291	1260	308	26618756
5/18/2026	60	1440	142	12261369	248	1800	165	14263000	163	-	406	1360	307	26524369
5/19/2026	61	1470	142	12253939	240	1800	162	14031000	160	2900	472	1400	304	26284939
5/20/2026	60	1460	139	12032841	235	1800	159	13696000	154	2900	507	1560	298	25728841
5/21/2026	58	1470	140	12065673	237	1800	158	13618000	153	2920	528	1590	297	25683673
5/22/2026	55	1470	152	13103078	242	1810	159	13711000	157	2920	549	1710	310	26814078
5/23/2026	63	1490	159	13739242	259	1800	162	13997000	162	2890	569	1930	321	27736242
5/24/2026	66	1530	159	13697251	258	1810	158	13684000	157	2900	593	1920	317	27381251
5/25/2026	65	1530	157	13588906	258	1840	162	14006000	159	2900	615	1950	319	27594906
5/26/2026	62	1530	156	13473475	259	1860	162	13968000	158	2890	633	1980	318	27441475
5/27/2026	60	1530	155	13399171	257	1860	162	13961000	158	2900	645	1960	317	27360171
5/28/2026	55	1540	155	13396406	248	1850	161	13875000	157	2910	641	-	316	27271406
5/29/2026	48	1540	154	13324866	236	1850	161	13901000	157	2910	633	1960	315	27225866
5/30/2026	41	1540	151	13078540	232	1910	160	13833000	157	2900	644	1980	311	26911540
5/31/2026	39	1540	151	13026097	236	1910	160	13784000	156	2900	630	1970	310	26810097
Minimum	39	1260	0	0	76	1280	0	0	1	823	214	1150	0	0
Maximum	101	1540	159	13739242	259	1910	165	14269000	163	2920	645	1980	324	28008242
Average	67	1374	96	8316220	178	1580	92	7909742	90	1927	411	1420	188	16225962
			Total (Mgal)	1928			Total (Mgal)	1834					Total (Mgal)	3762
			Total (Ac-ft)	5918			Total (Ac-ft)	5629					Total (Ac-ft)	11547

Notes:

- cfs - cubic feet per second
- µS/cm - Microsiemens per Centimeter at 25 degrees Celsius
- ft3 - cubic feet
- Mgal - Millions of Gallons
- Ac ft - Acre Feet
- USGS streamflow and specific conductance data are preliminary and courtesy of the USGS

**Sheyenne River Upstream of West End Outlet Near Flora
Monthly Water Quality Summary
Devils Lake Outlet Discharge Report**

Date	Time	Specific Conductance USGS Gage (μ S/cm)	pH	Sulfate (mg/L)	7 Day Rolling Average of Sulfate (mg/L)	Total Suspended Solids (mg/L)	Number of samples included in 7- day Average
5/1/26	-	-	-	-	-	-	-
5/2/26	-	-	-	-	-	-	-
5/3/26	-	-	-	-	-	-	-
5/4/26	-	-	-	-	-	-	-
5/5/26	-	-	-	-	-	-	-
5/6/26	-	-	-	-	-	-	-
5/7/26	-	-	-	-	-	-	-
5/8/26	-	-	-	-	-	-	-
5/9/26	-	-	-	-	-	-	-
5/10/26	-	-	-	-	-	-	-
5/11/26	-	-	-	-	-	-	-
5/12/26	-	-	-	-	-	-	-
5/13/26	8:00:00	1390	8.4	275	275	NA	1
5/14/26	-	-	-	-	-	-	-
5/15/26	-	-	-	-	-	-	-
5/16/26	-	-	-	-	-	-	-
5/17/26	-	-	-	-	-	-	-
5/18/26	-	-	-	-	-	-	-
5/19/26	-	-	-	-	-	-	-
5/20/26	8:05:00	1460	8.44	317	317	NA	1
5/21/26	-	-	-	-	-	-	-
5/22/26	-	-	-	-	-	-	-
5/23/26	-	-	-	-	-	-	-
5/24/26	-	-	-	-	-	-	-
5/25/26	-	-	-	-	-	-	-
5/26/26	8:10:00	1530	8.33	353	353	NA	1
5/27/26	-	-	-	-	-	-	-
5/28/26	-	-	-	-	-	-	-
5/29/26	-	-	-	-	-	-	-
5/30/26	-	-	-	-	-	-	-
5/31/26	-	-	-	-	-	-	-
Minimum		1390	8.33	275	275		
Maximum		1530	8.44	353	353	NA	
Average		1460	8.39	315	315	0	

Notes:

μ S/cm - microsiemens per Centimeter at 25 degrees Celsius
mg/L - milligrams per liter or parts per million
NA - Not analyzed
USGS specific conductance data courtesy of the USGS
USGS data are provisional and subject to revision

**West End Outlet
Monthly Water Quality Summary
Devils Lake Outlet Discharge Report**

Date	Time	Specific Conductance from Telemetry System (µS/cm)	pH	Sulfate (mg/L)	7 Day Rolling Average of Sulfate (mg/L)	Total Suspended Solids (mg/L)	Number of samples included in 7-day Average
5/1/26	-	-	-	-	-	-	-
5/2/26	-	-	-	-	-	-	-
5/3/26	-	-	-	-	-	-	-
5/4/26	-	-	-	-	-	-	-
5/5/26	-	-	-	-	-	-	-
5/6/26	-	-	-	-	-	-	-
5/7/26	-	-	-	-	-	-	-
5/8/26	-	-	-	-	-	-	-
5/9/26	-	-	-	-	-	-	-
5/10/26	-	-	-	-	-	-	-
5/11/26	-	-	-	-	-	-	-
5/12/26	-	-	-	-	-	-	-
5/13/26	8:15:00	-	8.41	631	631	NA	1
5/14/26	-	-	-	-	-	-	-
5/15/26	-	-	-	-	-	-	-
5/16/26	-	-	-	-	-	-	-
5/17/26	-	-	-	-	-	-	-
5/18/26	-	-	-	-	-	-	-
5/19/26	-	-	-	-	-	-	-
5/20/26	8:15:00	-	8.48	678	678	NA	1
5/21/26	-	-	-	-	-	-	-
5/22/26	-	-	-	-	-	-	-
5/23/26	-	-	-	-	-	-	-
5/24/26	-	-	-	-	-	-	-
5/25/26	-	-	-	-	-	-	-
5/26/26	8:15:00	-	8.42	680	680	NA	1
5/27/26	-	-	-	-	-	-	-
5/28/26	-	-	-	-	-	-	-
5/29/26	-	-	-	-	-	-	-
5/30/26	-	-	-	-	-	-	-
5/31/26	-	-	-	-	-	-	-
Minimum			8.41	631	631		
Maximum			8.48	680	680	NA	
Average			8.44	663	663	0	

Notes:

µS/cm - microsiemens per Centimeter at 25 degrees Celsius
mg/L - milligrams per liter or parts per million
NA - Not analyzed

**East End Outlet
Monthly Water Quality Summary
Devils Lake Outlet Discharge Report**

Date	Time	Specific Conductance USGS Gage (µS/cm)	pH	Sulfate (mg/L)	7 Day Rolling Average of Sulfate (mg/L)	Total Suspended Solids (mg/L)	Number of samples included in 7-day Average
5/1/26	-	-	-	-	-	-	-
5/2/26	-	-	-	-	-	-	-
5/3/26	-	-	-	-	-	-	-
5/4/26	-	-	-	-	-	-	-
5/5/26	-	-	-	-	-	-	-
5/6/26	-	-	-	-	-	-	-
5/7/26	-	-	-	-	-	-	-
5/8/26	-	-	-	-	-	-	-
5/9/26	-	-	-	-	-	-	-
5/10/26	-	-	-	-	-	-	-
5/11/26	-	-	-	-	-	-	-
5/12/26	-	-	-	-	-	-	-
5/13/26	-	-	-	-	-	-	-
5/14/26	-	-	-	-	-	-	-
5/15/26	-	-	-	-	-	-	-
5/16/26	-	-	-	-	-	-	-
5/17/26	-	-	-	-	-	-	-
5/18/26	-	-	-	-	-	-	-
5/19/26	-	-	-	-	-	-	-
5/20/26	9:30:00	2900	8.62	986	986	NA	1
5/21/26	-	-	-	-	-	-	-
5/22/26	-	-	-	-	-	-	-
5/23/26	-	-	-	-	-	-	-
5/24/26	-	-	-	-	-	-	-
5/25/26	-	-	-	-	-	-	-
5/26/26	9:30:00	2890	8.55	1026	1026	NA	1
5/27/26	-	-	-	-	-	-	-
5/28/26	-	-	-	-	-	-	-
5/29/26	-	-	-	-	-	-	-
5/30/26	-	-	-	-	-	-	-
5/31/26	-	-	-	-	-	-	-
Minimum		2890	8.55	986	986		
Maximum		2900	8.62	1026	1026	NA	
Average		2895	8.59	1006	1006	0	

Notes:

µS/cm - microsiemens per Centimeter at 25 degrees Celsius
mg/L - milligrams per liter or parts per million
NA - Not analyzed

**Sheyenne River Downstream of Both Outlets Near Cooperstown
Monthly Water Quality Summary
Devils Lake Outlet Discharge Report**

Date	Time	Specific Conductance USGS Gage (μ S/cm)	pH	Sulfate (mg/L)	7 Day Rolling Average of Sulfate (mg/L)	Total Suspended Solids (mg/L)	Number of samples included in 7- day Average
5/1/26	-	-	-	-	-	-	-
5/2/26	-	-	-	-	-	-	-
5/3/26	-	-	-	-	-	-	-
5/4/26	-	-	-	-	-	-	-
5/5/26	-	-	-	-	-	-	-
5/6/26	-	-	-	-	-	-	-
5/7/26	-	-	-	-	-	-	-
5/8/26	-	-	-	-	-	-	-
5/9/26	-	-	-	-	-	-	-
5/10/26	-	-	-	-	-	-	-
5/11/26	-	-	-	-	-	-	-
5/12/26	-	-	-	-	-	-	-
5/13/26	10:35:00	1250	8.44	281	281	NA	1
5/14/26	-	-	-	-	-	-	-
5/15/26	-	-	-	-	-	-	-
5/16/26	-	-	-	-	-	-	-
5/17/26	-	-	-	-	-	-	-
5/18/26	-	-	-	-	-	-	-
5/19/26	-	-	-	-	-	-	-
5/20/26	10:35:00	1560	8.46	389	389	NA	1
5/21/26	-	-	-	-	-	-	-
5/22/26	-	-	-	-	-	-	-
5/23/26	-	-	-	-	-	-	-
5/24/26	-	-	-	-	-	-	-
5/25/26	-	-	-	-	-	-	-
5/26/26	10:51:00	1980	8.35	598	598	NA	1
5/27/26	-	-	-	-	-	-	-
5/28/26	-	-	-	-	-	-	-
5/29/26	-	-	-	-	-	-	-
5/30/26	-	-	-	-	-	-	-
5/31/26	-	-	-	-	-	-	-
Minimum		1250	8.35	281	281		
Maximum		1980	8.46	598	598	NA	
Average		1597	8.42	423	423	0	

Notes:

μ S/cm - microsiemens per Centimeter at 25 degrees Celsius
mg/L - milligrams per liter or parts per million
NA - Not analyzed
USGS specific conductance data courtesy of the USGS
USGS data are provisional and subject to revision